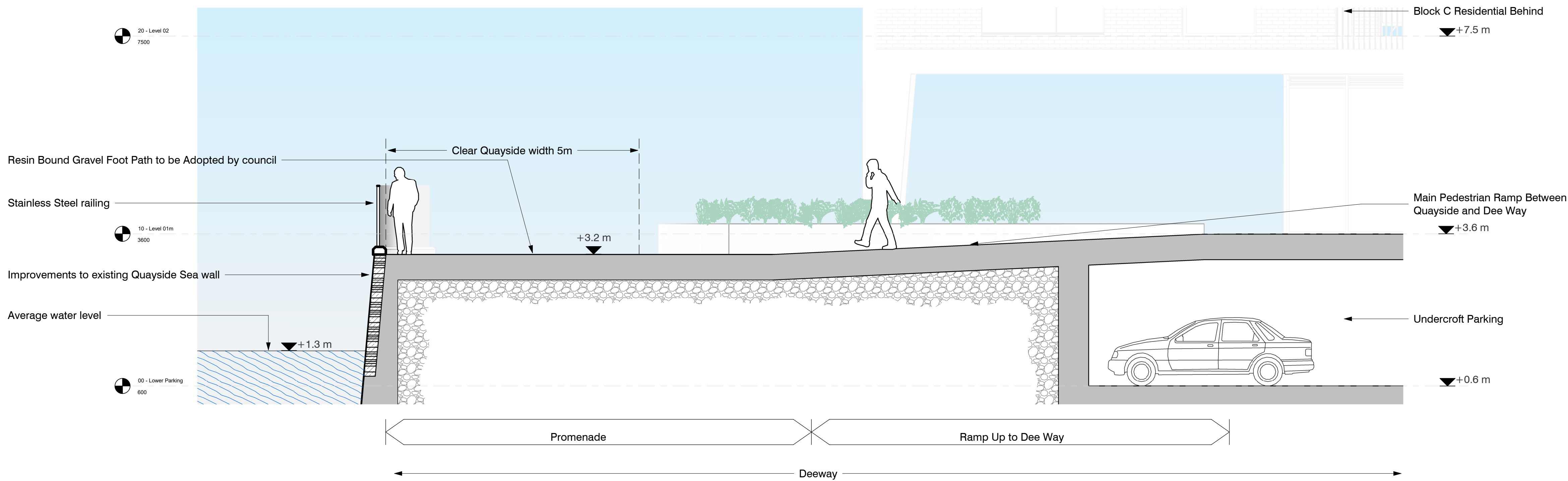
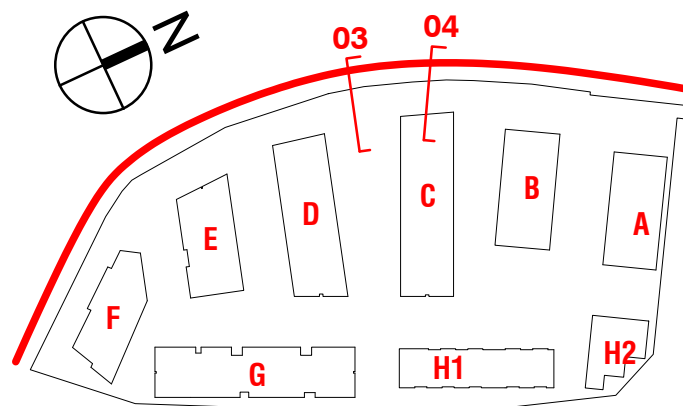
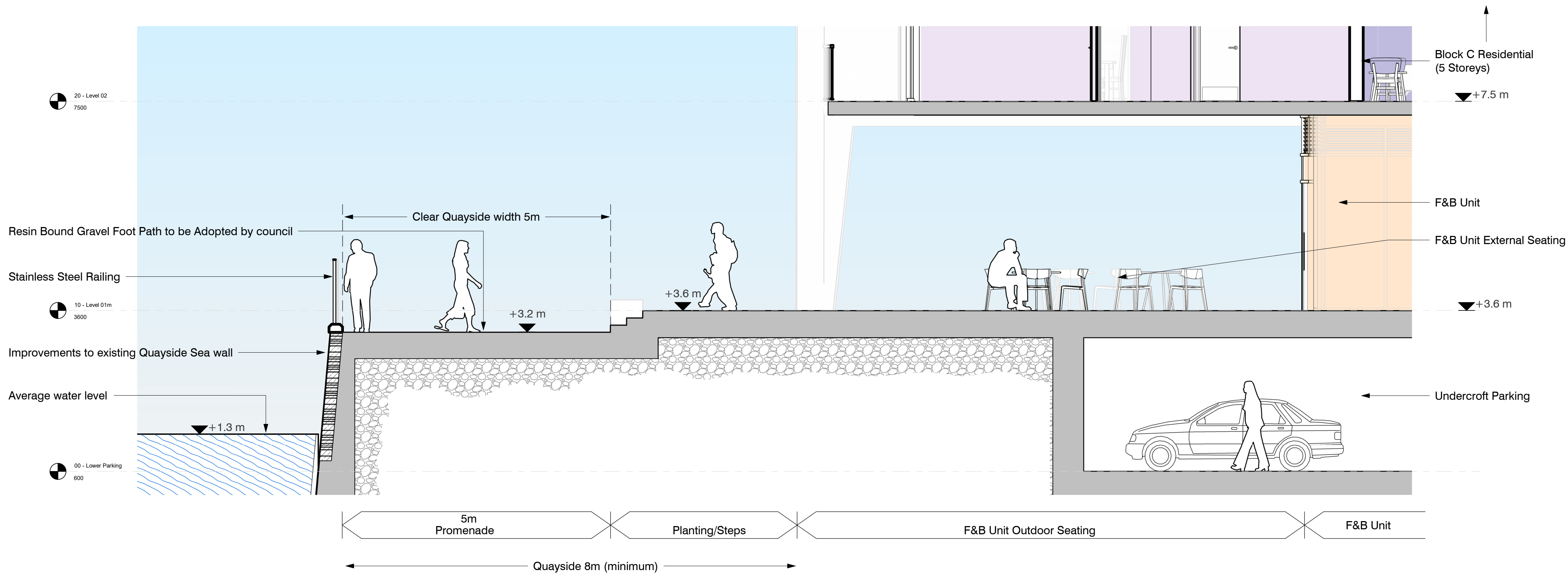


Orientation

Key Plan



3 Quayside Section 03
1 : 50



4 Quayside Section 04
1 : 50

P03	04.02.22	Amendments to planning drawings issued on 26.03.21	SM	AR
P02	26.03.21	Amendments to planning drawings issued on 05.04.19	SS	AR
P01	08.07.19	Added Information for planning issued on 28.05.18	SM	AR

Rev. Date	Revision	By	Checked
-----------	----------	----	---------

leonard design architects
4th floor, Albion House
5-13 Canal Street
Nottingham, NG1 7EG, United Kingdom
t. +44 (0) 115 945 0080
e. office@leonarddesignarchitects.com

Client
Reuben & Morgan Ltd.

Project
West Quay Road, Poole

Drawing Title
Indicative Quayside Sections 03-04

Project Number	Suitability
0625	S4
Drawn by	Checked by
LW	AR
Scale @A1	Date
As indicated	08.07.2019
File Identifier	Revision
0625 - LDA - ZZ - ZZ - DR - A - 08097	P03

Purpose of Issue
PLANNING

Project Status
PLANNING